



NAMRIA

Women and Men Workforce at a Glance

The women and men of the National Mapping and Resource Information Authority providing maps, charts, and other geospatial products and services through gender-responsive programs and projects.
DATA SOURCE: GADIS, December 2022

634

TOTAL PERMANENT EMPLOYEES

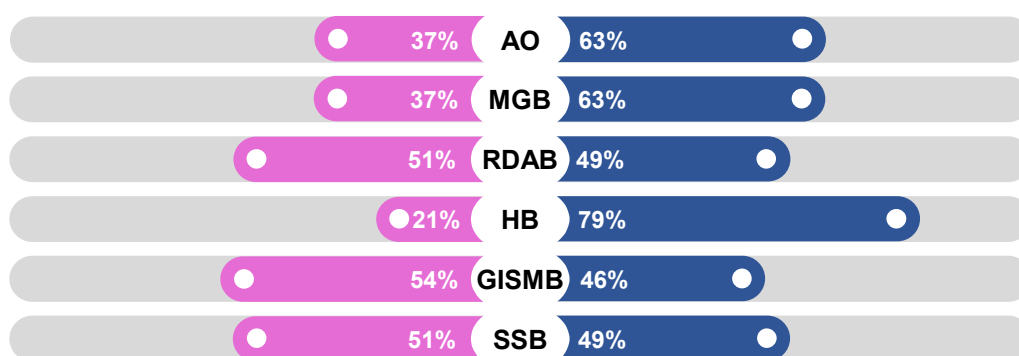
36%

64%

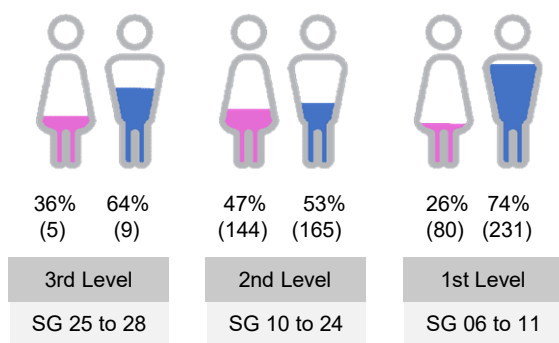
229 Total Women

405 Total Men

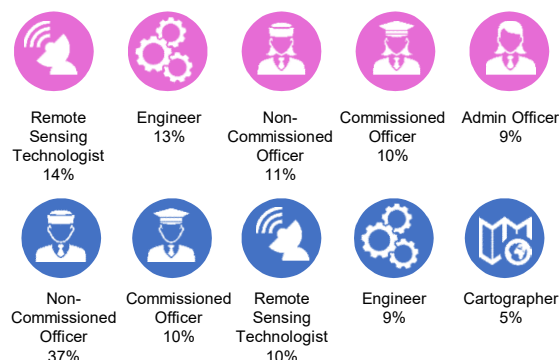
Distribution of Women and Men by Branch



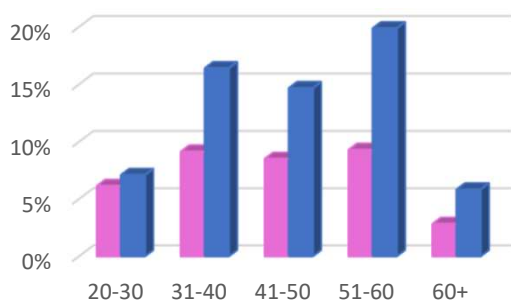
By Position Level



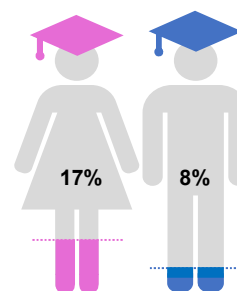
Top 5 Positions Occupied



By Age Group



With Graduate Degree



For more information, you may contact the NAMRIA Gender and Development Focal Point System Secretariat at +63-2 8884-2867/ +63-2 88104831 to 44 Loc. 730/751 or email gad@namria.gov.ph. You may also visit <https://namria.gov.ph/gad.php>.